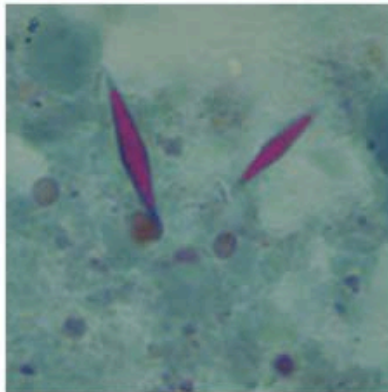


Question 40 – Week of May 13

32 year old female with history for HIV presents with large volume watery diarrhea. She recently moved to the United States from sub-Saharan Africa. Her labs are significant for CD4 count 42, eosinophilia. Fecal smear is shown below.

Question 3.



What is the most likely cause of her diarrhea.

- A. TB
- B. Isospora
- C. Cryposporidiosis
- D. Tropical sprue
- E. Microsporidia

Answer: B

The lesions seen on the fecal smear are called Charcot – Leyden crystals, which are classic for Isospora, as is the presentation in a patient with low CD4 count, from sub-Saharan Africa with eosinophilia.

Reference:

Guiguet M, et al. HIV-associated *Isospora belli* infection: incidence and risk factors in the French Hospital Database on HIV. *HIV Med.* 2007 Mar;8(2):124-30.

Soave R. Cryptosporidiosis and isosporiasis in patients with AIDS. *Infect Dis Clin North Am.* 1988 Jun;2(2):485-93.