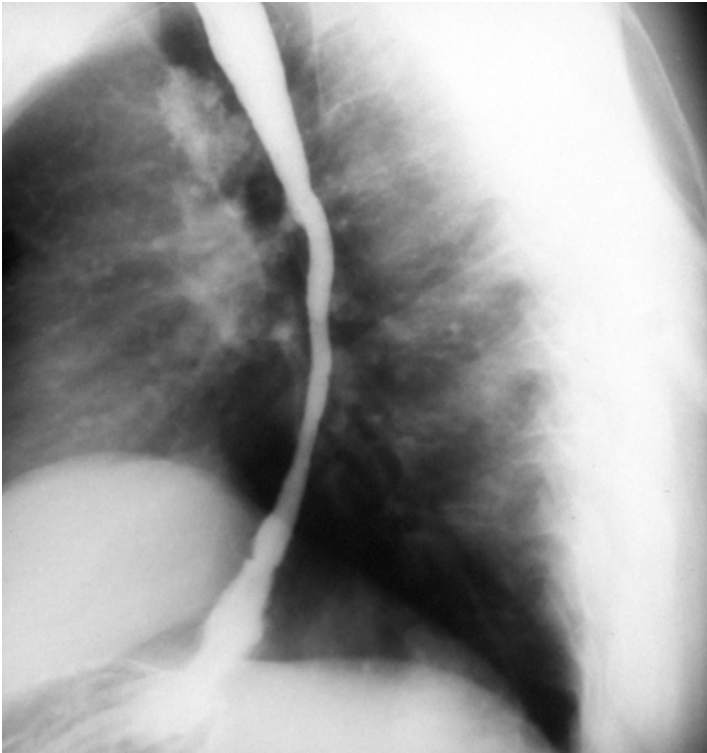


What is a patient presenting with the following esophagram and history of lye ingestion at risk for?



ANSWER: Esophageal cancer

There is a 1000x greater risk for development of esophageal cancer after ingestion of lye. Mean onset of cancer is 47 years, and cancers are most often mid-esophageal. The resectability rate is 85%, with a 5-year survival of 33%. The mean interval to development of cancer is 40 years, though this may be shorter if ingestion occurred later in life. Alkalai ingestion causes liquefactive necrosis, and acidic ingestion causes a coagulation necrosis. Glucocorticoids have not been proven in prospective trials to prevent stricture formation in caustic ingestion. (Slesinger and Fordtran 8th ed.)