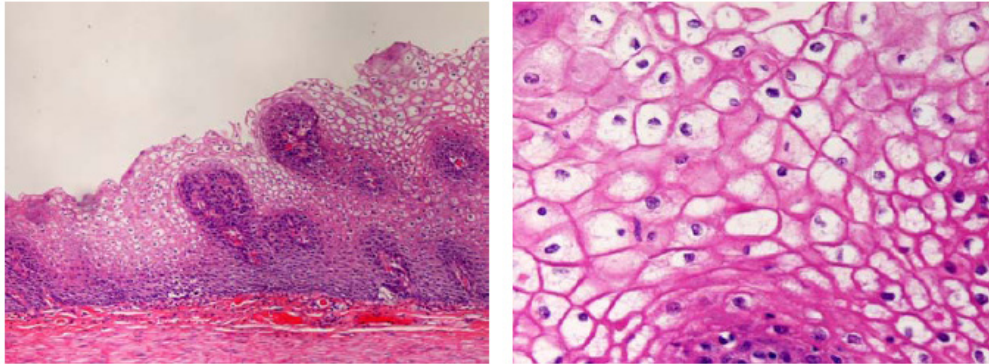


Question 20 – December 15

A 57 year old with weight loss, scleroderma, and bacterial overgrowth undergoes an EGD. She denies dysphagia and reflux. Whitish / yellow plaques are seen in her mid esophagus and are biopsied. What is the next most appropriate step?



- A. Do nothing; this is a benign condition
- B. Start acyclovir
- C. Start gancyclovir
- D. Start fluconazole

Answer: A

This is glycogenic acanthosis, a benign condition of the esophagus. It is seen in up to 15% of all upper endoscopies. They typically appear as multiple uniformly lined round lesions. They have been described in association with Cowden syndrome. Biopsies show multifocal plaques of hyperplastic squamous epithelium with abundant intracellular glycogen.

References:

1. Feldman. Sleisenger and Fordtran's Gastrointestinal and Liver Disease, 9th ed.