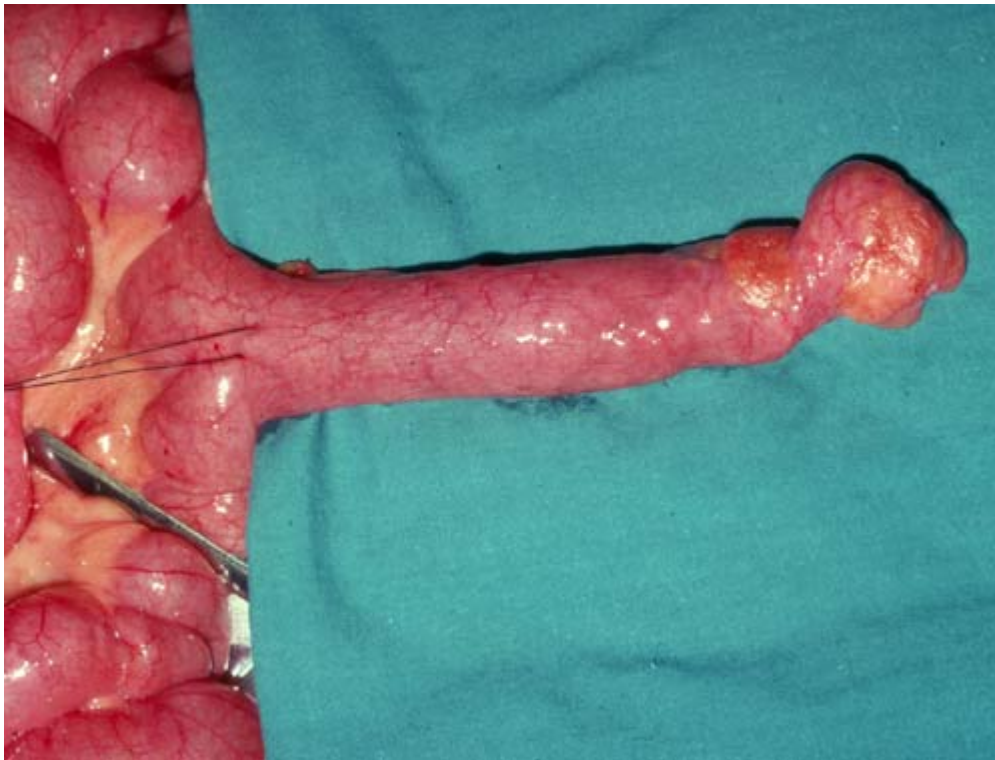


This small bowel abnormality presents more commonly in adulthood as obstruction than in childhood where it presents more commonly with bleeding. What is this abnormality?



ANSWER: Meckel's diverticulum

Explanation: A Meckel's diverticulum is present in 1-3% of the population based on autopsy studies, is present on the antimesenteric border of the intestine, and contains all four layers of bowel wall, including serosa. Although reported throughout the small intestine, the most common location is within 100 cm of the ileocecal valve. Bleeding is a more common presentation in children, whereas obstruction is more common in older patients. The diagnosis can be made utilizing technetium-99m pertechnetate scintigraphy rather than colloid scintigraphy.