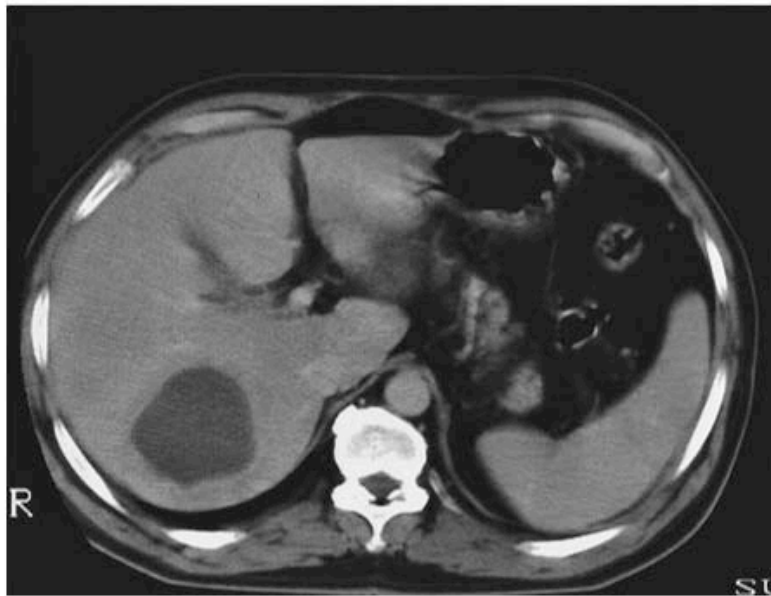


Question 28 – Week of February 18

A 32 year old male with AIDS presents with several weeks of fevers, abdominal pain and diarrhea. On exam he appears toxic, and his abdomen is notable for tenderness to palpation. Labs were notable for leukocytosis, anemia and elevated alkaline phosphatase and GGT. A CT scan of the abdomen and pelvic were obtained.

Question 4.



What is the most likely cause of colitis?

- A. TB
- B. IBD
- C. E. histolytica
- D. MAC
- E. CMV

Answer: C

While CMV and MAC also cause fulminant colitis in AIDS, only Entamoeba causes liver abscesses also.

References:

Nanda U, Musharrat K. A dose of tropical medicine. *Emerg Med J*. 2010. Dec; 27(12):963.

Stark D, et al. Invasive Amebiasis in Men Who Have Sex with Men, Australia. *Emerg Infect Dis*. 2008 July; 14(7): 1141–1143.