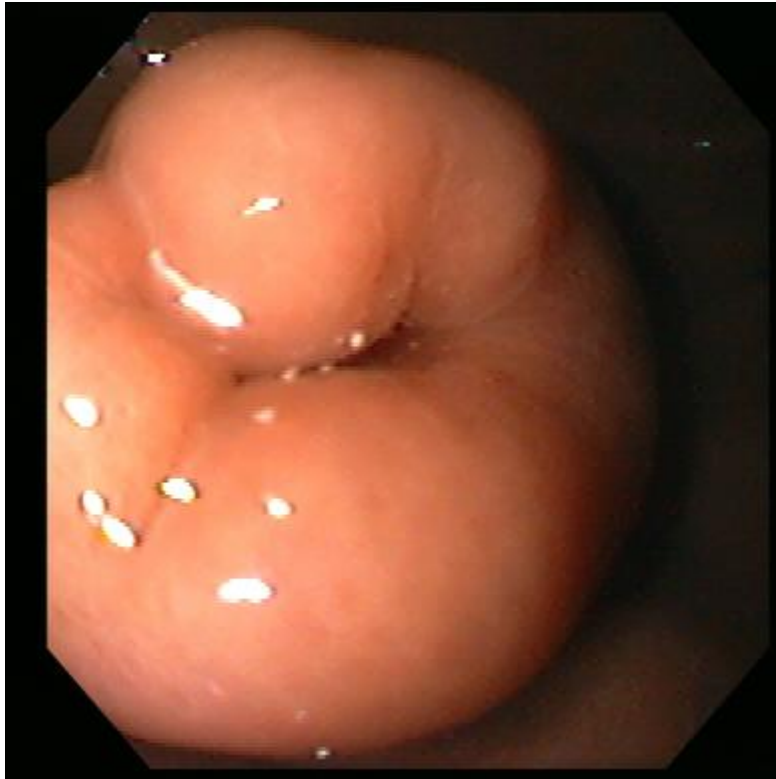


With regards to the pancreatic REST shown here, which of the following is true?

- a. Endoscopic biopsy almost always provides a diagnosis.
- b. They are typically malignant at presentation.
- c. If found incidentally on endoscopic evaluation, these lesions should always be surgically excised due to their high malignant potential.
- d. These lesions most commonly consist of cystically dilated pancreatic exocrine cells.



ANSWER: D. These lesions most commonly consist of cystically dilated pancreatic exocrine cells.