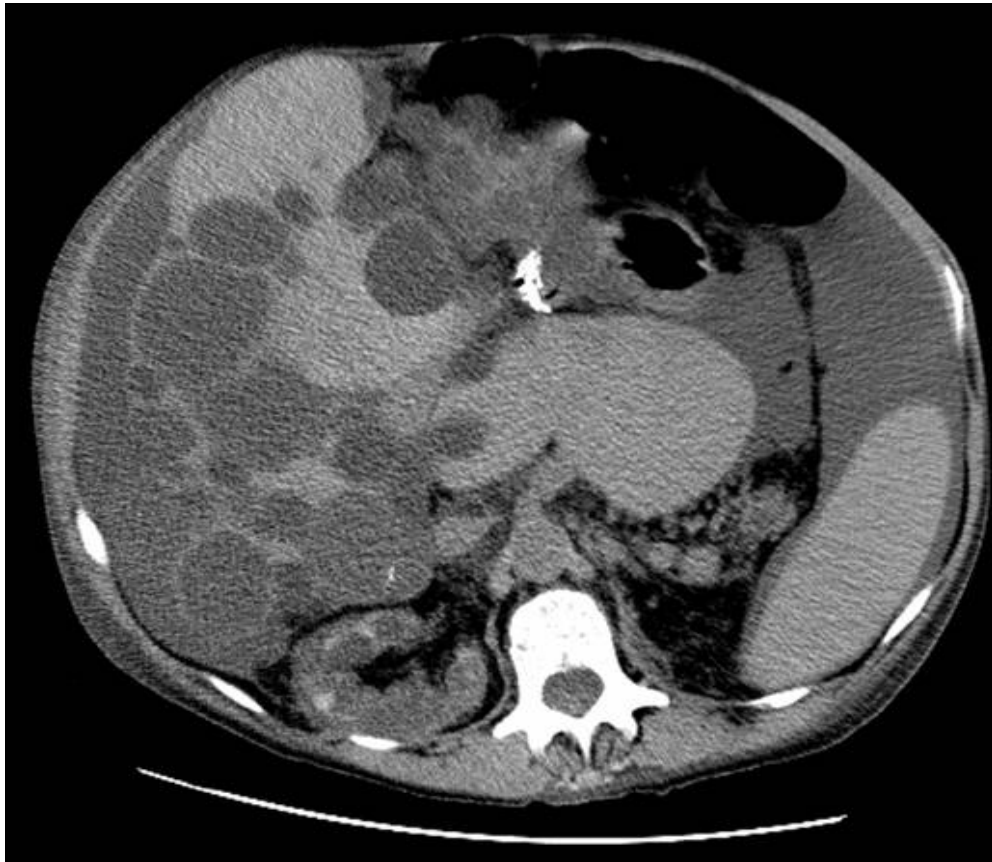


Which **ONE** of the following statements regarding the condition demonstrated by the CT scan is correct?

- a. There is an autosomal-recessive inheritance pattern
- b. The condition is associated with cerebral aneurysms
- c. Hepatic cysts are derived from sinusoidal vascular epithelium
- d. The *PKD1* gene has been linked to chromosome 9
- e. Patients frequently present with hepatic synthetic dysfunction



ANSWER: B. The condition is associated with cerebral aneurysms

Explanation: Autosomal-Dominant Polycystic Kidney disease (ADPKD) is an autosomal dominant disorder caused by a mutation in the PKD1 gene on chromosome 16. Extra-renal manifestations include cerebral aneurysms and hepatic cysts. Hepatic cysts are derived from biliary epithelium. Most patients are asymptomatic from the liver cysts. Patients with massive involvement of the liver present with pain and may develop non-cirrhotic portal hypertension. Hepatic synthetic function is typically unaffected.