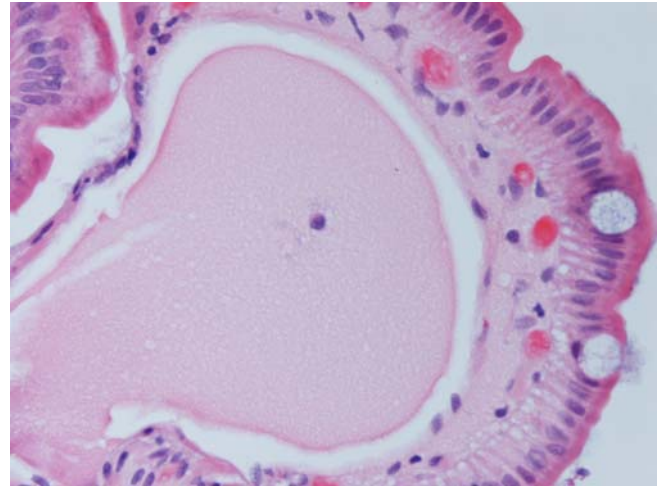
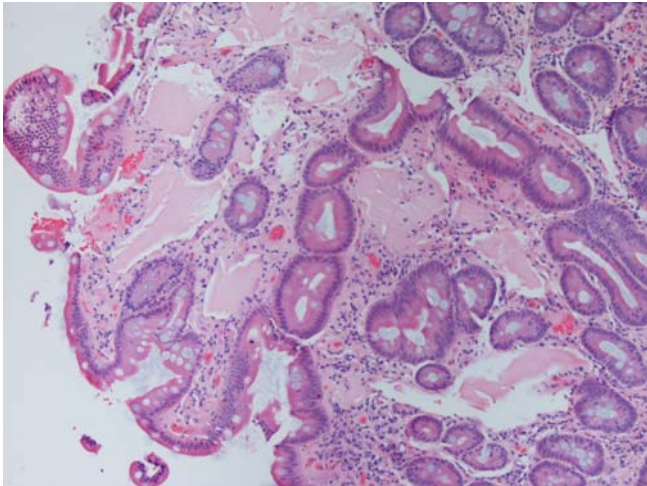


The infiltrative condition shown is characterized by all of the following EXCEPT?

- a. Coagulopathy is common, and can manifest with gastrointestinal hemorrhage
- b. The infiltrative deposits may stain positive with periodic acid-Schiff (PAS) stain
- c. The infiltrative material often contains IgA and is often located in the lamina propria
- d. Symptoms may include diarrhea, weight loss or abdominal pain
- e. Dilated lymphatics can be seen histologically from this condition



ANSWER: C. The infiltrative material often contains IgA and is often located in the lamina propria

Explanation: The small bowel biopsy specimen reveals evidence of Waldenstrom's macroglobulinemia. The low power view (7A) reveals evidence of dilated lymphatics and an infiltrative process, with the high power view (7B) again demonstrating deposition of pink material that contains IgM with monoclonal light chains. These patients may present with diarrhea, weight loss and pain, as well as from bleeding complications. The IgM deposits may stain weakly with PAS stain, giving a similar picture to Whipple's disease, which not only has similar staining capabilities, but also has dilated lymphatics similar to Waldenstrom's.