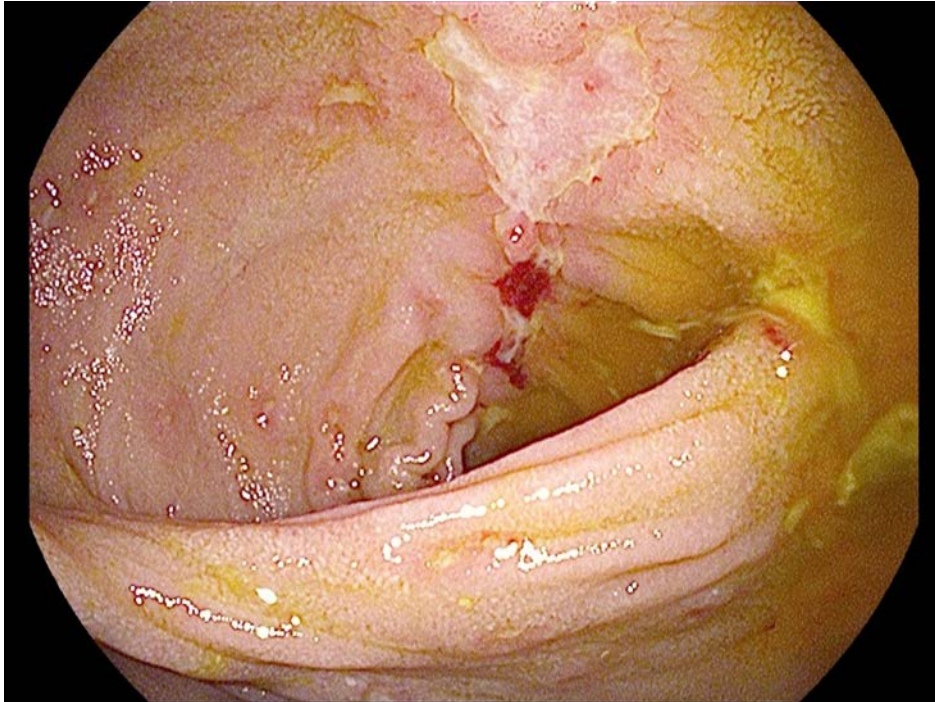


### Question 35 – April 9

Your patient with moderate inflammatory Crohn's ileitis with right lower quadrant abdominal pain and the following colonoscopy findings in the image below. You're treating with azathioprine 100 mg daily and now has AST 220, ALT 160. You check metabolites and find suprathreshold levels of 6-MMP and normal levels of 6-TGN levels.

What is your recommendation?



- A. Increase the dose of azathioprine to 150mg and recheck liver enzymes.
- B. Maintain the same dose of azathioprine and attain a liver biopsy.
- C. Decrease the azathioprine to 50mg and add allopurinol 50mg daily.
- D. Continue the azathioprine at the same dose and start adalimumab therapy.
- E. Decrease the dose of azathioprine to 50mg and recheck liver enzymes.

**Answer: C**

These adverse effects on the liver enzymes are likely related to the 6MMP metabolite. Decreasing the azathioprine and adding allopurinol would help shunt the metabolism away from 6MMP and increase 6TG active metabolite concentration.

#### Reference

Gastroenterology & Hepatology. 2008;4(7):505-511.