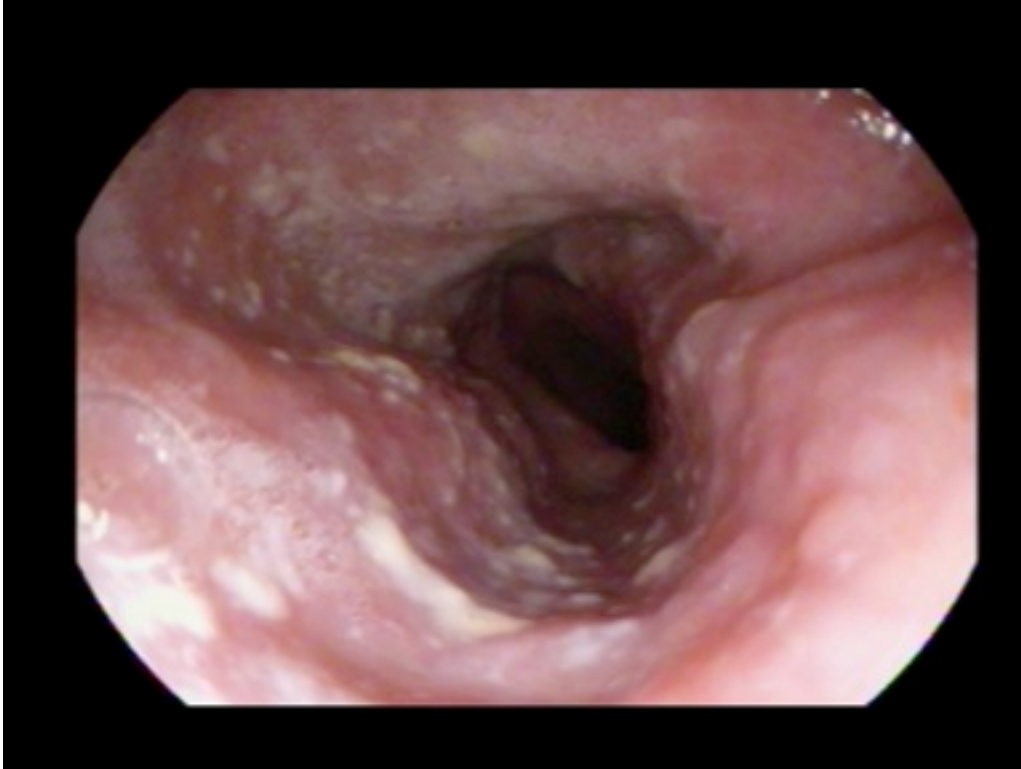


Question 40 – June 6

You perform an endoscopy on a 22 year old man who presented with dysphagia of 3 weeks duration and 5lb weight loss in the past 3 weeks:



He has a prior history of intravenous drug abuse and multiple sexual partners. This patient most likely has:

- A. HPV
- B. CMV
- C. Hepatitis C
- D. HIV

Answer: D

These findings are most consistent with candida esophagitis. This infectious esophagitis is most commonly found in the immunocompromised hosts especially those with HIV. Other immunodeficiency states are possible such as common variable immune deficiency (CVID) but given the patients history here, HIV is more likely. CMV typically presents as multiple ulcerations. Patients with hepatitis C are not at increased risk for candida esophagitis unless co-infected with HIV. HPV is associated with esophageal papillomas but these are discrete lesions within the esophagus and do not appear as whitish adherent plaques.

References:

Thom K, Forrest G. Gastrointestinal infections in immunocompromised hosts. *Curr Opin Gastroenterol* 2006 Jan;22 (1) :18-23