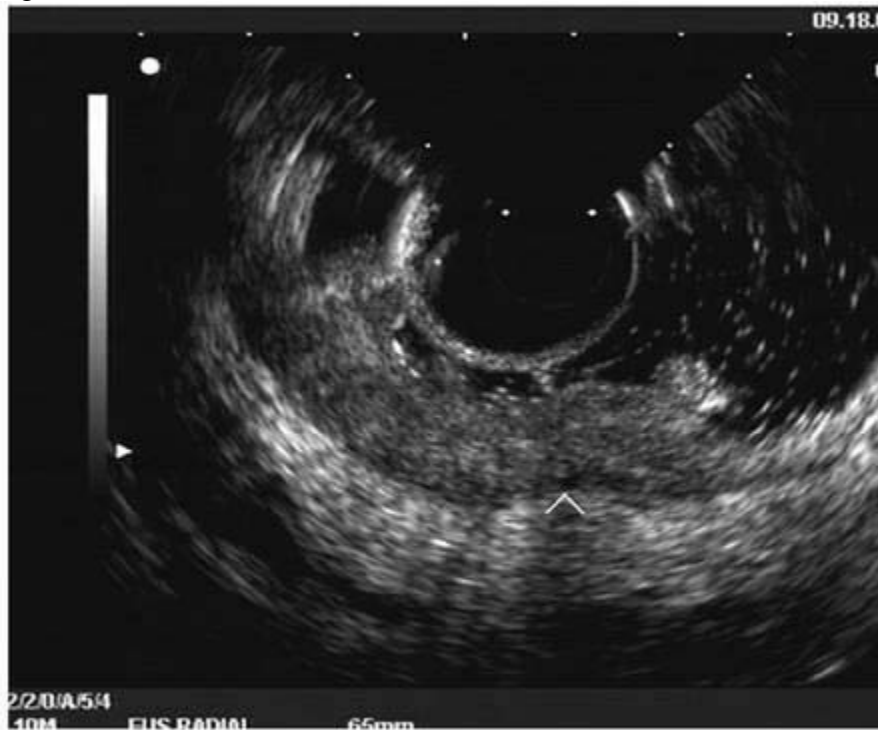


### Question 15 – Week of March 19

A rectal EUS demonstrates that the tumor has infiltrated the muscularis propria (figure 1). It does not appear to penetrate through the muscularis propria into the peri-rectal fat. What stage is the lesion?

- A. T1 tumor
- B. T2 tumor
- C. T3 tumor
- D. T4 tumor

Figure 1:



**Answer: B**

Explanation: Malignant colorectal tumors appear as hypoechoic masses on EUS. A tumor that by EUS appears to be limited to the mucosa or the submucosa (first three echo layers) is classified as a T1 lesion. A colorectal carcinoma invading into the muscularis propria (hypoechoic fourth EUS layer) but with an intact outer margin of the muscularis propria and with no penetration completely through the muscularis propria will be a T2 lesion, as demonstrated in the image above. A T3 lesion by EUS penetrates completely through the rectal wall and all the EUS layers, has irregular outer margins or has tumorous pseudopodia extending beyond the five echo layers. A T4 lesion by EUS is a colorectal cancer that is locally invading into an adjacent organ.

Reference:

Gress F, Savides T. Endoscopic Ultrasonography, Second Edition, Wiley-Blackwell, Oxford UK, 2009: pg 161.