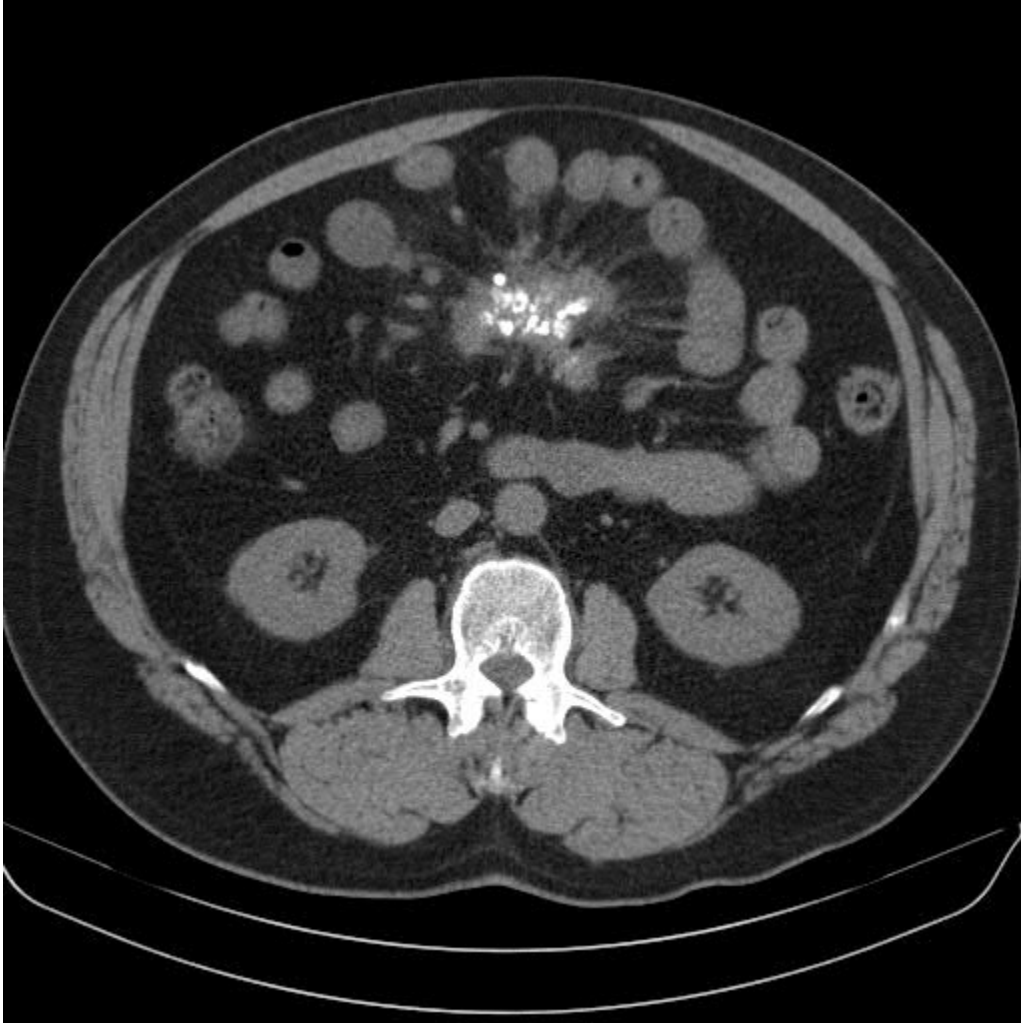


Question 37 – May 16

The most common clinical presentation of patients affected by the process depicted in the image below is:



- A. Asymptomatic, incidental finding on imaging
- B. Anorexia and weight loss
- C. Abdominal pain
- D. Palpable mass
- E. Diarrhea

Answer: C

The disease depicted in the figure is sclerosing mesenteritis. According to the 3 largest series published to date, abdominal pain is by far the most common clinical presentation.

Reference:

Akram S, Pardi DS, Schaffner JA, Smyrk TC. Sclerosing mesenteritis: clinical features, treatment, and outcome in ninety-two patients. *Clin Gastroenterol Hepatol.* 2007;5(5):589.