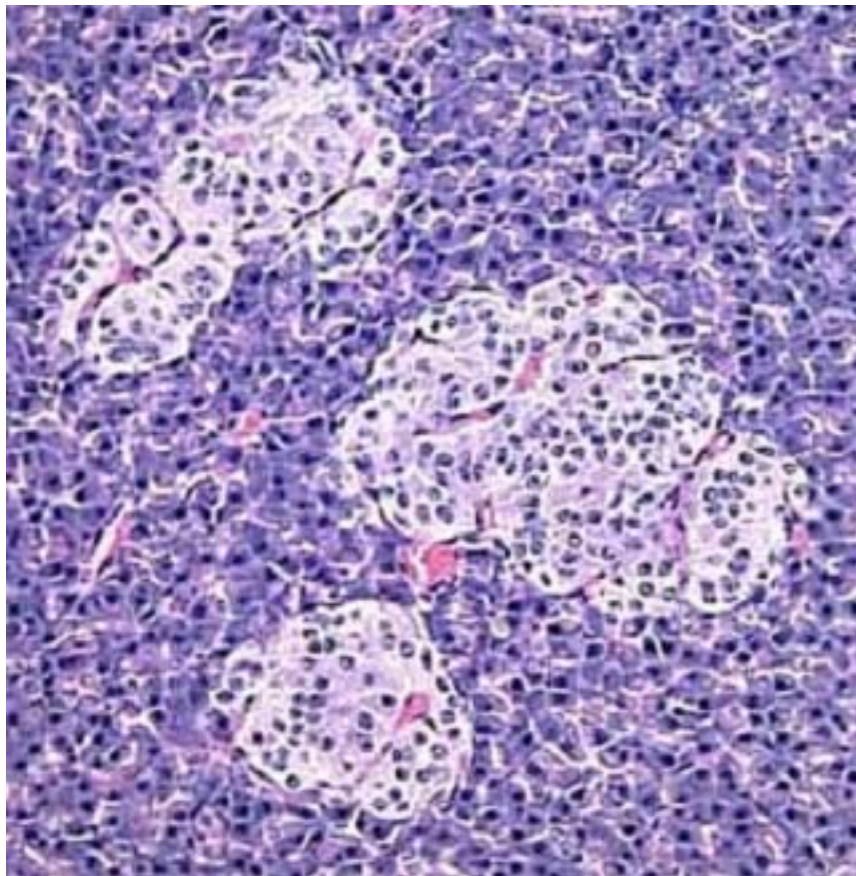


Pancreatic islets house three major cell types, each of which produces a different endocrine product:

1. **Alpha cells** (A cells) secrete the hormone **glucagon**.
2. **Beta cells** (B cells) produce **insulin**
3. **Delta cells** (D cells) secrete what hormone?



ANSWER: Delta cells (D cells) secrete the hormone somatostatin, which is also produced by a number of other endocrine cells in the body.